





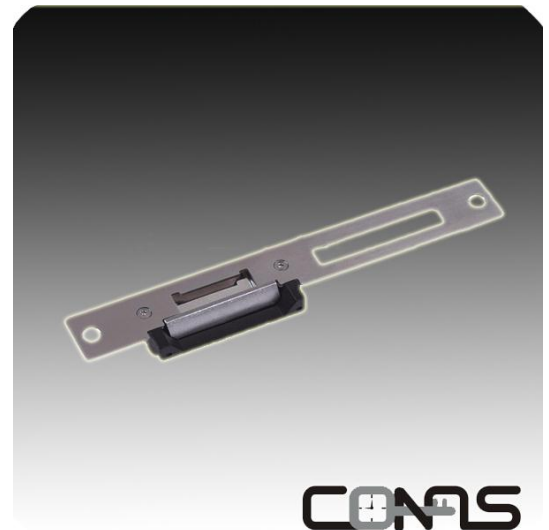
ELSTR09 – User Manual

Description

The ELSTR09 is a Long – type European Electric Strike.
This Electric Strike has an holding strength of 800kg.
The ELSTR09 is suitable for: Wooden doors, Metal doors
and PVC doors.
Normal open and normal close model are optional.

Parameters

-  Voltage: DC 12V
-  Current: 250mA
-  Holding strength: 800kg
-  Suitable for:
 - Wooden door
 - Metal door
 - PVC door



Specification

Model	ELSTR09
Magnetic Lock Type	Long-type European Electric Strike (Normal open and normal close model optional)
Holding Strength	800kg
Voltage	DC 12V
Current Draw	250mA
Lock Size	250 x 32 x 36
Face plate Housing	Painted Steel
Function	Build-out MOV

INSTALLATION

